

PANEL SYSTEM TYPICAL



Finishes Shown:
 Paint & Edge: MT
 Work Surface: Ochre Tempera
 Panel Fabric: Milkyway - Sea Spray, Nexus - Khaki, Nexus - Sky

LIST PRICING

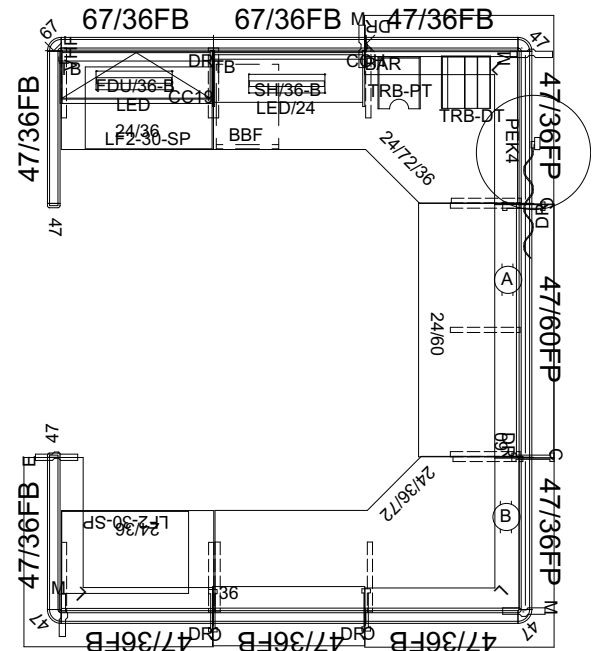
Part Number	Part Description	QTY	List Price	Ext. List
2WY47A2	47" - 2 WAY CONNECTOR	3	\$159.00	\$477.00
2WY67A2	67" - 2 WAY CONNECTOR	1	\$179.00	\$179.00
BBF-SP	BOX/BOX/FILE PEDESTAL, SQUARE PULL 20"D W/O TOP	1	\$725.00	\$725.00
CB	CENTER BRACKET	4	\$45.00	\$180.00
CC36	36" COUNTER CAP	1	\$215.00	\$215.00
CC60	60" COUNTER CAP	1	\$295.00	\$295.00
CCC4444SQ	44 7/8 X 44 7/8 SQUARE CORNER COUNTER CAP	3	\$545.00	\$1,635.00
COH	CHANGE OF HEIGHT FILLER - PANEL TO PANEL	1	\$35.00	\$35.00
EB	END BRACKET	1	\$44.00	\$44.00
EC47A2	47" END CAP	2	\$70.00	\$140.00
ECWS362472L	36 X 24 X 72 CORNER WORK SURFACE - LEFT EXTENSION	1	\$959.00	\$959.00
ECWS362472R	36 X 24 X 72 CORNER WORK SURFACE - RIGHT EXTENSION	1	\$959.00	\$959.00
F4736	47 X 36 FABRIC PANEL - W/BASE	6	\$655.00	\$3,930.00
F4736P	47 X 36 FABRIC PANEL - POWERED	2	\$959.00	\$1,918.00
F4760P	47 X 60 FABRIC PANEL - POWERED	1	\$1,219.00	\$1,219.00
F6736	67 X 36 FABRIC PANEL - W/BASE	2	\$785.00	\$1,570.00
FDU3612B	36 X 12 FLIPPER DOOR UNIT - B STYLE	1	\$559.00	\$559.00
LF2-30-SP	30"W Lateral File, Square Pull, 2 Drawer	2	\$1,405.00	\$2,810.00
MEB	MID END BRACKET	3	\$44.00	\$132.00
MEBCOHV2	MID END BRACKET WITH COH	1	\$44.00	\$44.00
PEK4 (L OR R)	4 CIR. BASE POWER ENTRY KIT	1	\$525.00	\$525.00
PTP42	42" PANEL TO PANEL CONNECTOR	5	\$29.00	\$145.00
PTP62	62" PANEL TO PANEL CONNECTOR	1	\$30.00	\$30.00
REC/A	A CIRCUIT DUPLEX RECEPTACLES	1	\$45.00	\$45.00
REC/B	B CIRCUIT DUPLEX RECEPTACLES	1	\$45.00	\$45.00
SH3612B	36 X 12 SHELF - B STYLE	1	\$215.00	\$215.00
SQLEG	2"W x 27.5"H Square Desk Leg	1	\$245.00	\$245.00
TB36B	36" X 16" TACKBOARD - B STYLE	2	\$215.00	\$430.00
TLN-LED-24-S	Conn. Cord adjoining 36" & 42" shelves	1	\$18.00	\$18.00
TLN-LED-S-1	LED Task Light w/ Motion Sensor and Power Supply	2	\$409.00	\$818.00
TRB36	TOOL RAIL BAR 36"	1	\$115.00	\$115.00
TRBDPT	DIAGONAL PAPER TRAY	1	\$109.00	\$109.00
TRBVPT	VERTICAL PAPER TRAY	1	\$64.00	\$64.00
VHF	VARIABLE HEIGHT FILLER - PANEL TO CONNECTOR	1	\$34.00	\$34.00
WS2436	24 X 36 WORK SURFACE	2	\$365.00	\$730.00
WS2460	24 X 60 WORK SURFACE	1	\$519.00	\$519.00

Reception Station LIST PRICE: \$22,112.00

STATION SPECIFICATIONS

- System:** Panel System
- Storage:** 1 Box/Box/File Pedestal, Square Pull
12 Drawer Lateral File, Square Pull
- Type:** Monolithic
- Size:** 9' x 11'
- Panel Height:** 47" & 67"
- Overheads:** 1 Flipper Door Unit
1 Shelf
- Accessories:** 2 Tackboards
2 LED Task Lights
Paper Management
- Power:** Base Feed
2 REC/Station
Power Down
Spine

2D DRAWING



TOTAL LIST PRICE: \$22,112.00