

PANEL SYSTEM TYPICAL



Finishes Shown:

Paint, Work Surface & Edge: WF
 FDU & Mullion Fabric: Streetwise - Stop Sign
 Panel Fabric: Zest - Fog
 Tack Board Fabric: Sprite - Snow

LIST PRICING

Part Number	Part Description	QTY	List Price	Ext. List
3WY67A2	67" - 3 WAY CONNECTOR	2	\$305.00	\$610.00
AKAVALUEEXT	Value Ext Keyboard Set- Includes 23" Track Arm & 20" Tray	2	\$499.00	\$998.00
BBF-FP	BOX/BOX/FILE PEDESTAL FULL PULL 23"D W/O TOP	2	\$799.00	\$1,598.00
CENLEG	Center Leg	2	\$409.00	\$818.00
CLEGL	C-LEG (Left) FOR 24" WORK SURFACE, ACCEPTS	2	\$409.00	\$818.00
COH	CHANGE OF HEIGHT FILLER - PANEL TO PANEL	2	\$35.00	\$70.00
CRNRBR- LEFT	CORNER BRACKET (SPEC L OR R)	2	\$12.00	\$24.00
CRNRBR- RIGHT	CORNER BRACKET (SPEC L OR R)	2	\$12.00	\$24.00
CRNRLEG	Corner Leg 90 Degree, Accepts Modesty Panel	2	\$335.00	\$670.00
EC32A2	32" END CAP	2	\$63.00	\$126.00
EC53A2	53" END CAP	2	\$72.00	\$144.00
ECWS482460L	48 X 24 X 60 CORNER WORK SURFACE - LEFT EXTENSION	1	\$959.00	\$959.00
ECWS482460R	48 X 24 X 60 CORNER WORK SURFACE - RIGHT	1	\$959.00	\$959.00
F3224	32 X 24 FABRIC PANEL - W/BASE	2	\$475.00	\$950.00
F5360P	53 X 60 FABRIC PANEL - POWERED	2	\$1,285.00	\$2,570.00
F6730P	67 X 30 FABRIC PANEL - POWERED	1	\$989.00	\$989.00
F6748P	67 X 48 FABRIC PANEL - POWERED	2	\$1,199.00	\$2,398.00
FDU4812B	48 X 12 FLIPPER DOOR UNIT- B STYLE	2	\$639.00	\$1,278.00
FF-FP	FILE/FILE PEDESTAL FULL PULL 23"D W/OUT TOP	2	\$799.00	\$1,598.00
HLEG30	H-Leg For 30" Worksurface	1	\$419.00	\$419.00
MODPNL48	37.5" Modesty Panel For 48" Worksurface	4	\$319.00	\$1,276.00
PEK4 (L OR R)	4 CIR. BASE POWER ENTRY KIT	1	\$525.00	\$525.00
PTP48	48" PANEL TO PANEL CONNECTOR	2	\$30.00	\$60.00
R.CR	2" POST LEG	1	\$245.00	\$245.00
REC/A	A CIRCUIT DUPLEX RECEPTACLES	2	\$45.00	\$90.00
REC/B	B CIRCUIT DUPLEX RECEPTACLES	2	\$45.00	\$90.00
SH3012B	30 X 12 SHELF - B STYLE	1	\$199.00	\$199.00
TB30B	30" X 16" TACKBOARD- B STYLE	1	\$199.00	\$199.00
TB48B	48" X 16" TACKBOARD- B STYLE	2	\$235.00	\$470.00
TLN-LED-S-1	LED Task Light w/ Motion Sensor and Power Supply	3	\$409.00	\$1,227.00
TRB60	TOOL RAIL BAR 60"	2	\$169.00	\$338.00
TRBDPT	DIAGONAL PAPER TRAY	4	\$109.00	\$436.00
TRBVPT	VERTICAL PAPER TRAY	2	\$64.00	\$128.00
VHF	VARIABLE HEIGHT FILLER - PANEL TO CONNECTOR	2	\$34.00	\$68.00
WS2448	24 X 48 WORK SURFACE	2	\$409.00	\$818.00
WS2448	24 X 48 WORK SURFACE	2	\$409.00	\$818.00
WS3096	30 X 96 WORK SURFACE	1	\$965.00	\$965.00

2 Pack - Freestanding & OPS2 Panels

LIST PRICE: \$25,972.00
\$12,986.00/station

STATION SPECIFICATIONS

Size:
 8' x 11'-6"

Storage:
 Shelf Flipper Door

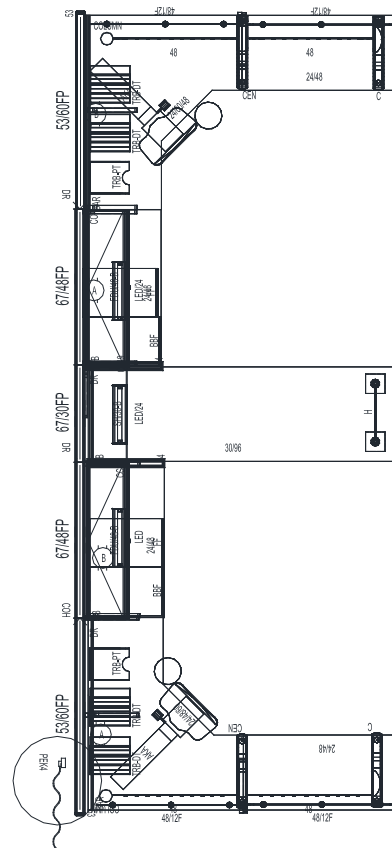
Panel Height:
 53"H & 67"H

Accessories:
 1 Tackboard
 LED Task Lights
 1 Tool Rail Bar
 3 Paper Trays

Pedestals:
 1 BBF-FP
 1-FF-FP

Power:
 Base Feed
 2 REC/Station
 Power Down
 Spine

2D DRAWING



TOTAL LIST PRICE: \$25,972.00