

SIXTY-FIVE SYSTEM

6 X 9 TYPICAL



STATION OVERVIEW

Station Size

6' x 9'

Station Height

46" + 70"

Power

Base
Beltline

Tile Style

Fabric Tackable Acoustic
Metal Perforated Air flow
Metal Beltline Power
Metal Base

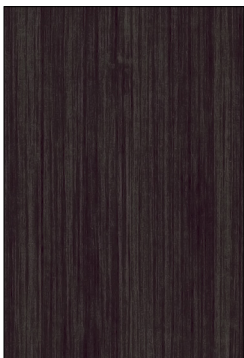
Accessories/Extras

8" Frameless Glass Top Dividers

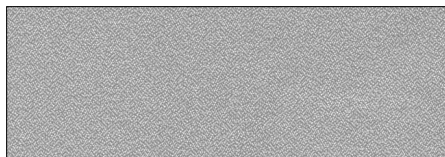
Storage

36" W Overhead Binder Bin
DS-2D-36-FP-M 36w Low Storage Full Pull
DS-BF-FP-M Low Mobile Pedestal
14.6" W Seat Cushion for BF Pedestal

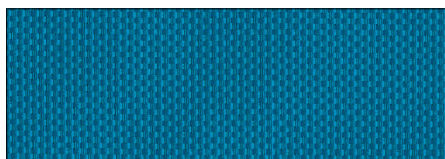
FINISHES



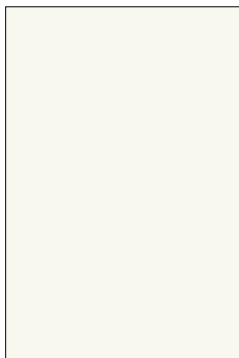
SURFACE & EDGE
Shadow Ridge



MAIN FABRIC OPS Cinder



ACCENT FABRIC Whisper Placid



PAINT WF



SIXTY-FIVE SYSTEM

6X9 TYPICAL

Part Number	Part Description	Qty	List	Ext List	Part Number	Part Description	Qty	List	Ext List
65AFT-1624	16"H X 24"W Perf Air Flow Tile	4	\$68.00	\$272.00	65P-PWR36V1	36" Power Harness-V1	3	\$205.00	\$615.00
65AFT-1636	16"H X 36"W Perf Air Flow Tile	14	\$89.00	\$1,246.00	65P-R-I	Rec Circuit 1	2	\$41.00	\$82.00
65BB-36	36"W Overhead Binder Bin	2	\$899.00	\$1,798.00	65P-R-II	Rec Circuit 2	2	\$41.00	\$82.00
65BC-36	36"W Base Cover (Blank)	11	\$51.00	\$561.00	65PMT-0836	8"H X 36"W Mid Pos Metal Tile w/Elec Knockout	1	\$58.00	\$58.00
65BCE-36	36"W Base Cover w/Knockout	3	\$62.00	\$186.00	65TA-0824	8"H X 24"W Tack Acoustic Tile	4	\$93.00	\$372.00
65C2-46	46"H 2-Way 90 Deg Conn Post	2	\$129.00	\$258.00	65TA-0836	8"H X 36"W Tack Acoustic Tile	20	\$115.00	\$2,300.00
65C2-70	70"H 2-Way 90 Deg Conn Post	2	\$195.00	\$390.00	65TA-0836	8"H X 36"W Tack Acoustic Tile	1	\$115.00	\$115.00
65F-3024	30"H X 24" W Frame	2	\$249.00	\$498.00	65TA-1636	16"H X 36"W Tack Acoustic Tile	19	\$109.00	\$2,071.00
65F-4636	46"H X 36"W Frame	4	\$385.00	\$1,540.00	65TC-36	36"W Top Cap	7	\$41.00	\$287.00
65F-7036	70"H X 36"W Frame	3	\$469.00	\$1,407.00	65TF-SRC	Side Rail Cover Tile - Pair	4	\$47.00	\$188.00
65FE-30	30"H Finished End	2	\$37.00	\$74.00	CC36	36" Counter Cap	2	\$215.00	\$430.00
65FGA-24-8H.F	8"H X 24"W Frameless	2	\$195.00	\$390.00	CCC4444SQ	44 7/8 X 44 7/8 Sq Crnr Cap- 36W Panels	1	\$545.00	\$545.00
65HLFE-16	Hi/Lo Finished End - 16"H	2	\$26.00	\$52.00	DOCKLEG	3"H Docking Leg w/Adj Glide for Desking	2	\$56.00	\$112.00
65HLFE-24	Hi/Lo Finished End -24"H	2	\$30.00	\$60.00	DS-2D-36-FP-M	36"W x 20"D x 24"H Low Storage, 2 Drawer, FP	1	\$2,079.00	\$2,079.00
65P-BL-ML	49" Base Line to Belt Line Festoon	1	\$169.00	\$169.00	DS-BF-FP-M	Low Metal Mobile Box/File- Full Pull	1	\$915.00	\$915.00
65P-PEK4V2	4 Cir Base Power Entry	1	\$535.00	\$535.00	DS-SC15	14.6"W Seat Cushion for Desking B/F Pedestal	1	\$139.00	\$139.00
65P-PTC	20.5" Power Festoon - Connector	1	\$83.00	\$83.00	65-ECCWS362472L	36 X 24 X 72 Curvilinear Corner Surface - Lft Ext	1	\$959.00	\$959.00
65P-PTP	18.5" Power Festoon Panel to Panel	1	\$89.00	\$89.00	ECCWS362472R	36 X 24 X 72 Curvilinear Corner Surface - Rt Ext	1	\$959.00	\$959.00
					WS2436	24 X 36 Work Surface	1	\$365.00	\$365.00

LIST TOTAL

\$22,281.00

